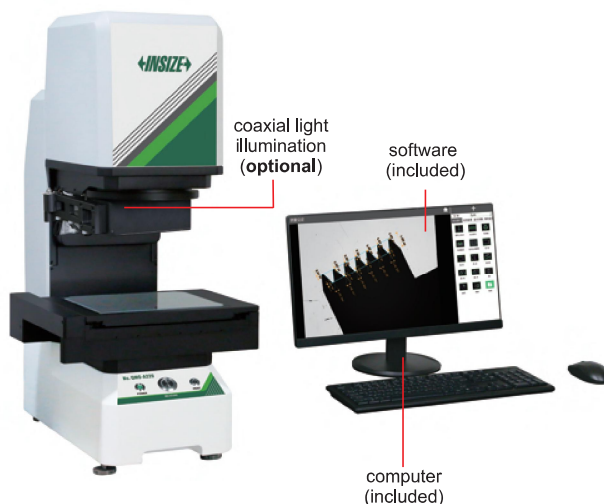


SMALL VIEW FIELD SUITABLE FOR MEASURING  
SMALL SIZES SUCH AS THREADS AND CHAMFERS

## QUICK MEASUREMENT SYSTEMS (WITH STITCHING)



QMS-A220

### SPECIFICATION

Code		QMS-A220		QMS-A315	
Optical lens		dual-field dual-telecentric low-distortion lens			
		wide view field: Ø100mm small view field: Ø25mm		wide view field: Ø100mm small view field: Ø25mm	
View field range		wide view field	small view field	wide view field	small view field
		100×80mm	20×16mm	100×80mm	25×20mm
Measurement range		200×200mm	130×130mm	300×200mm	230×130mm
Measurement accuracy *	without stitching	±3μm <sup>①</sup>	±1μm <sup>②</sup>	±3μm <sup>①</sup>	±1μm <sup>②</sup>
	with stitching	±(5+0.02L)μm <sup>③</sup>	±(3+0.02L)μm <sup>④</sup>	±(5+0.02L)μm <sup>⑤</sup>	±(3+0.02L)μm <sup>⑥</sup>
Repeatability	without stitching	±1μm	±0.5μm	±1μm	±0.5μm
	with stitching	±2μm	±1.5μm	±2μm	±1.5μm
Max. weight of workpiece		5kg			
Measurement time		<2s			
Measurement data		2D measurement			
Power supply		220V, 50Hz, 600W			
Illumination system	back light	telecentric illuminator, green light			
	ring light	4-zone circular white high light circular (directional) low-angle green light (electric)			
	coaxial light (optional)	vertical illuminator, white light			
Environmental requirement		temperature: 20°C±2°C, relative humidity: 30%~80%, vibration: <0.002g, less than 15Hz			
Dimension (L×W×H)		532×480×766mm		532×497×766mm	
Weight		50kg		60kg	

\* The optimum temperature is 20°C±1°C

① Within 80×64mm, on focal position and environment temperature at 20°C±1°C

② Within 20×16mm, on focal position and environment temperature at 20°C±1°C

③ Within 180×180mm, on focal position and environment temperature at 20°C±1°C

④ Within 117×117mm, on focal position and environment temperature at 20°C±1°C

⑤ Within 270×180mm, on focal position, environment temperature at 20°C±1°C, and workpiece is less than 2kg, L is the travel of stage

⑥ Within 207×117mm, on focal position, environment temperature at 20°C±1°C, and workpiece is less than 2kg, L is the travel of stage

- One or more workpieces can be measured by one step operation
- Place workpieces at any position
- Focus and measure automatically
- Measurement of 999+dimensions and 200+workpieces

### STANDARD DELIVERY

Main unit	1 pc
Computer	1 pc
Software	1 pc
Data transmission function	1 pc



rotary table (optional)



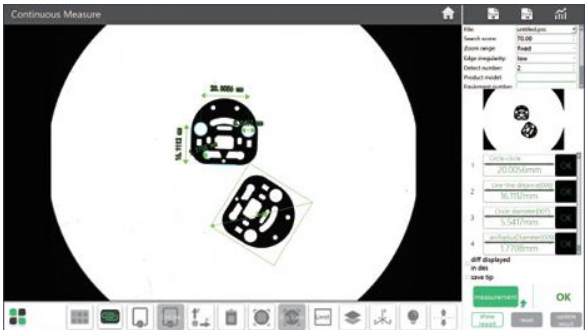
11.6" LCD (optional)

### OPTIONAL ACCESSORY

Coaxial light illumination	QMS-23-A3 (must be installed in factory)
Glass calibration plate	QMS-CALIBRATION
MES transmission function	QMS-23-E1
CAD import function	QMS-23-C1
Laser sensor	QMS-43-SJ1 (for QMS-A315, must be installed in factory)
Foot-switch	QMS-43-FS1
11.6" LCD	QMS-23-B1 (must be installed in factory)
Rotary table	QMS-43-RT1 (must be installed in factory)

### Software (included)

- Automatically measure widths, holes, rings, angles at the same time, simple and efficient



- Measuring result can be stored automatically. OK items and NG items can be counted automatically

